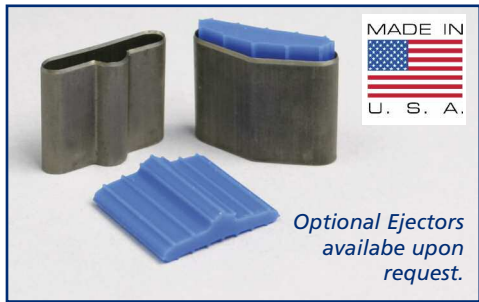


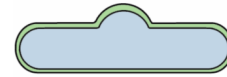


Wagner Seamless Hanger Punches



Also known as Butterfly, Bat Wings - Wagner Seamless Hanger Punches can be ordered by individual part number or by exclusive Wagner "Matched Sets" set number. The cutting edge is manufactured to a tolerance of $\pm .005"$. All are available in heights of .918", .937", 1-1/8" and 1-1/2". Other heights available upon request.

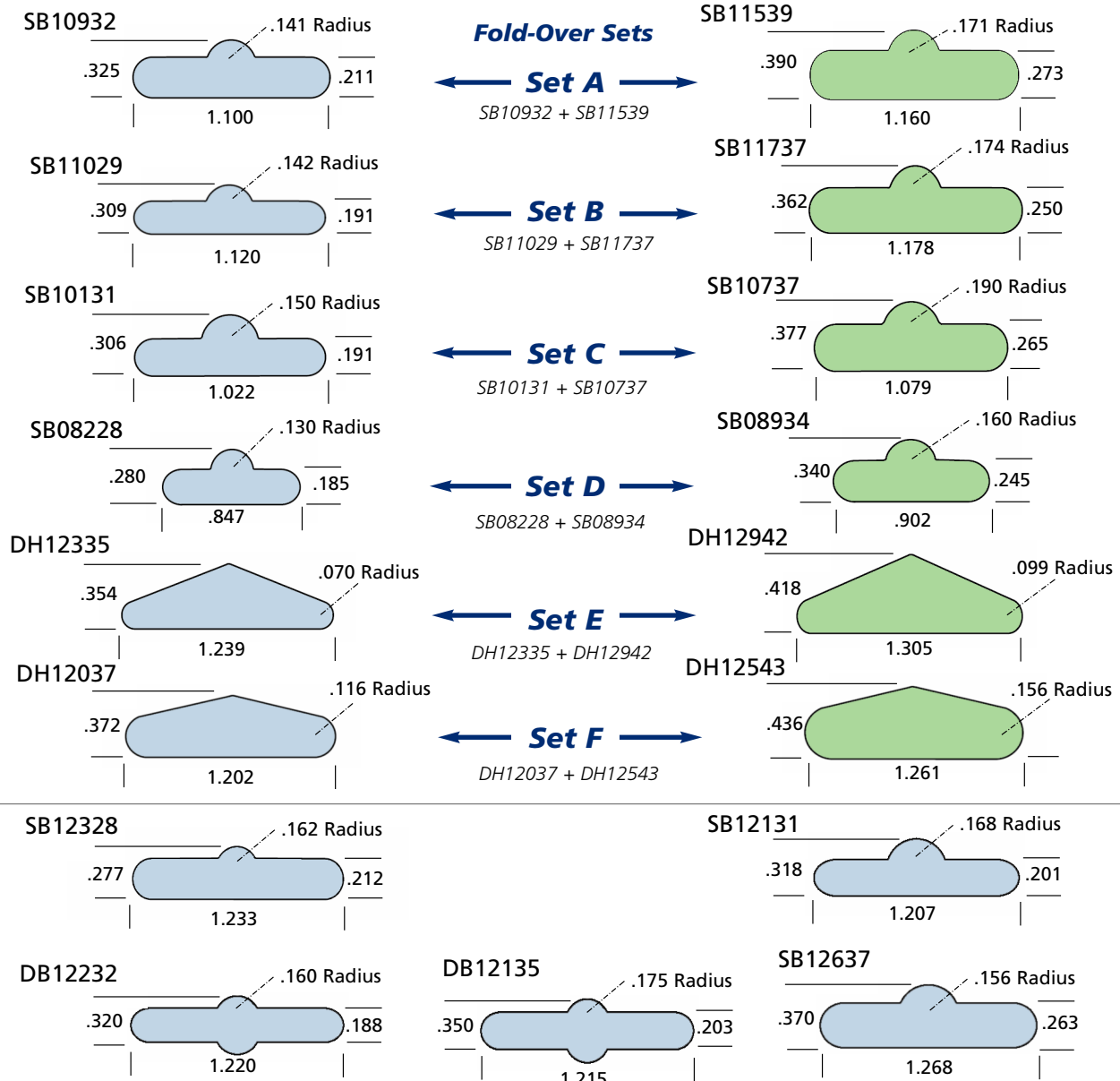
How Wagner Matched Sets work:



SB10932 (small) + # SB11539 = Set A

Designed to work together precisely, Wagner Matched Sets take the guesswork out of hanger hole punching!

Punches are available individually or in "Fold-Over" sets.



West
 2041 Elm Court • Ontario, CA 91761
 Toll-Free: (800) 423-4478
 Toll-Free Fax Orders: (866) 786-2437

Southwest
 2532 Converse Street • Dallas, TX 75207
 Toll-Free: (800) 262-4695
 Toll-Free Fax Orders: (800) 446-6651

Midwest
 960 Industrial Drive • Elmhurst, IL 60126
 Toll-Free: (800) 334-7914
 Toll-Free Fax Orders: (800) 554-9124