



Creasing Matrix & Tools



Channel[®] Creasing Matrix

Channel[®] Creasing Matrix offers a wide selection of Matrix in original metal-based, vulcanized fiberboard and plastic-based creasing matrix, as well as related tools.



Boxed quantities:

#24 to #105 matrix – 48 feet per box.

#120 to #250 and double crease matrix – 24 feet per box.



**CHANNEL[®]
CREASING
MATRIX, INC.**

Matrix Types



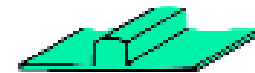
Standard Center Crease
is used for a Single Crease and is suitable for board thicknesses from .003" to .070".



Off-Center Crease
can be combined to form a double crease or used where a cutting rule is close to the creasing rule. Available in #40-OC, #50-OC & #60-OC.



Double-Crease Matrix
is used for multiple creases such as file folders and brochures. Center to center dimensions of the channels are 1/8", 3/16" and 1/4" in #50. Also available in 1/4" in #60.



Reverse Crease Matrix
acts as the male rule and is used to accomplish crease in reverse. Two rules in the die act as the channel. See CCM catalog for sizes.

Selection Chart for Original Matrix and Creasing Rule.

Paperboard Thickness	Matrix Size For 1pt.	Matrix Size For 2pt.	Matrix Size For 3pt.	Matrix Size For 4pt.	Matrix Size For 6pt.	Crease Height Using .937 Cut	Crease Height Using .918 Cut
.006	24	40	-	-	-	.921	.902
.008	24	40	-	-	-	.919	.900
.010	32	50	-	-	-	.917	.898
.012	-	50	67	-	-	.915	.896
.014	-	50	67	-	-	.913	.894
.016	-	60	67	-	-	.911	.892
.018	-	60	75	-	-	.909	.890
.020	-	67	75	-	-	.907	.888
.022	-	67	83	-	-	.905	.886
.024	-	75	83	-	-	.903	.884
.026	-	-	90	-	-	.901	.882
.028	-	-	90	-	-	.899	.880
.030	-	-	90	-	-	.897	.878
.032	-	-	105	-	-	.895	.876
.034	-	-	105	-	-	.893	.874
.036	-	-	105	120	-	.891	.872
.038	-	-	-	120	-	.889	.870
.040	-	-	-	120	-	.887	.868
.044	-	-	-	150	-	.883	.864
.048	-	-	-	150	-	.879	.860
.052	-	-	-	150	-	.875	.856
.056	-	-	-	200	-	.871	.852
.060	-	-	-	200	-	.867	.848
.064	-	-	-	200	200-250	.863	.844
.068	-	-	-	200-250	200-250	.859	.840
.072	-	-	-	200-250	200-250	.855	.836

The column that appears first in a particular row is the size of matrix and creasing rule recommended for best results with the perfect board. Some changes may be necessary due to board variation due to moisture content.

More Channel[®] Creasing Matrix next page...

West

2041 Elm Court • Ontario, CA 91761
Toll-Free: (800) 423-4478
Toll-Free Fax Orders: (866) 786-2437

Southwest

2532 Converse Street • Dallas, TX 75207
Toll-Free: (800) 262-4695
Toll-Free Fax Orders: (800) 446-6651

Midwest

960 Industrial Drive • Elmhurst, IL 60126
Toll-Free: (800) 334-7914
Toll-Free Fax Orders: (800) 554-9124



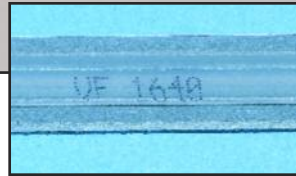
Creasing Matrix & Tools



Channel® Creasing Matrix (continued)



All Marathon Matrix VF™ comes labeled with sizing information right on the product, for easy identification.



Go on a "time diet", with Marathon Matrix VF™!

Marathon Matrix VF™ assures quick and easy makeready, reliable and accurate registration, and a high quality crease, run, after run, after run.

With its vulcanized fiberboard construction, Marathon Matrix VF™ allows for unsurpassed durability and registration for runs short or long.

Marathon Matrix VF™ Application Chart

Board Thickness	Crease Rule Thickness	Crease Rule Height Range*	With Grain	Across Grain	Extra Depth
.006	1 pt.	.927 - .931	VF1224	VF1224	N/A
.008	1 pt.	.925 - .929	VF1224	VF1232	N/A
	1-1/2 pt.	.925 - .929	VF1232	VF1232	
.010	1-1/2 pt.	.923 - .927	VF1232	VF1240	VF1640
	2 pt.	.923 - .927	VF1240	VF1248	VF1640-1648
.012	1-1/2 pt.	.921 - .925	VF1240	VF1240	VF1640
	2 pt.	.921 - .925	VF1240	VF1248	VF1640-1648
.014	2 pt.	.919 - .923	VF1648	VF1656	VF2048-2056
.016	2 pt.	.917 - .921	VF1648	VF1656	VF2048-2056
.018	2 pt.	.915 - .919	VF1656	VF1664	VF2056-2064
.020	2 pt.	.913 - .917	VF2064	VF2064	VF2464-2472
.022	2 pt.	.911 - .915	VF2064	VF2072	VF2464-2472
.024	2 pt.	.909 - .913	VF2472	VF2472	VF2480
	3 pt.	.909 - .913	VF2480	VF2490	VF2880-2890
.026	3 pt.	.907 - .911	VF2490	VF2490	VF2890
.028	3 pt.	.905 - .909	VF2890	VF28100	VF3290-32100
.030	3 pt.	.903 - .907	VF28100	VF28100	VF32100
.032	3 pt.	.901 - .905	VF32100	VF32110	VF32100-32110
	4 pt.	.901 - .905	VF32110	VF32120	VF40110-40120
.034	3 pt.	.898 - .903	VF32110	VF32110	VF40110
	4 pt.	.898 - .903	VF32110	VF32120	VF40110-40120
.036	3 pt.	.897 - .901	VF32110	VF32110	VF40110
	4 pt.	.897 - .901	VF32120	VF32120	VF40120
.040	4 pt.	.893 - .897	VF40120	VF40136	VF40120-40136



*Values are for .937 cutting rule.
When using other cutting rule heights, appropriate adjustments must be made.

Tips on using Channel® Creasing Matrix:

- Channel width can be determined by multiplying the board thickness by a factor of 1.5 or 2.0 and adding this amount to the crease rule thickness.
- Crease rule height is generally determined by subtracting the board thickness from the cutting rule height. It may be necessary to vary the creasing rule height due to board type, bond strength, moisture content or thickness variations.
- Depending upon the board type, it may be necessary to run a more narrow or deeper channel on "with grain" creases to obtain the desired result.
- Due to wide variations in board quality, moisture content, coatings and bending characteristics, some experimentation may be necessary. The guidelines are only a foundation on which special exceptions should be built.

Please see next page for a complete listing of available sizes.

More Channel® Creasing Matrix next page...

West

2041 Elm Court • Ontario, CA 91761
Toll-Free: (800) 423-4478
Toll-Free Fax Orders: (866) 786-2437

Southwest

2532 Converse Street • Dallas, TX 75207
Toll-Free: (800) 262-4695
Toll-Free Fax Orders: (800) 446-6651

Midwest

960 Industrial Drive • Elmhurst, IL 60126
Toll-Free: (800) 334-7914
Toll-Free Fax Orders: (800) 554-9124



Creasing Matrix & Tools



Channel[®] Creasing Matrix (continued)

Marathon Matrix VF[™] part numbers and sizes

The first 2 digits of each part number represent the depth of the channel and the last 2 or 3 digits represent the width of the channel, both figures are in thousands of an inch.

For example: 1224 = .012 channel depth and .024 channel width.

Part number:	Part number:	Part number:	Part number:
VF1224	VF2048	VF2864	VF4080
VF1232	VF2052	VF2868	VF4090
VF1240	VF2056	VF2872	VF40100
VF1248	VF2060	VF2880	VF40110
VF1252	VF2064	VF2890	VF40120
VF1256	VF2068	VF28100	VF40136
	VF2072		
VF1632	VF2080	VF3272	
VF1640		VF3280	
VF1648	VF2456	VF3290	
VF1652	VF2460	VF32100	
VF1656	VF2464	VF32110	
VF1660	VF2468	VF32120	
VF1664	VF2472	VF32136	
VF1668	VF2480		
VF1672	VF2490		

More Channel[®] Creasing Matrix next page...

West

2041 Elm Court • Ontario, CA 91761
 Toll-Free: (800) 423-4478
 Toll-Free Fax Orders: (866) 786-2437

Southwest

2532 Converse Street • Dallas, TX 75207
 Toll-Free: (800) 262-4695
 Toll-Free Fax Orders: (800) 446-6651

Midwest

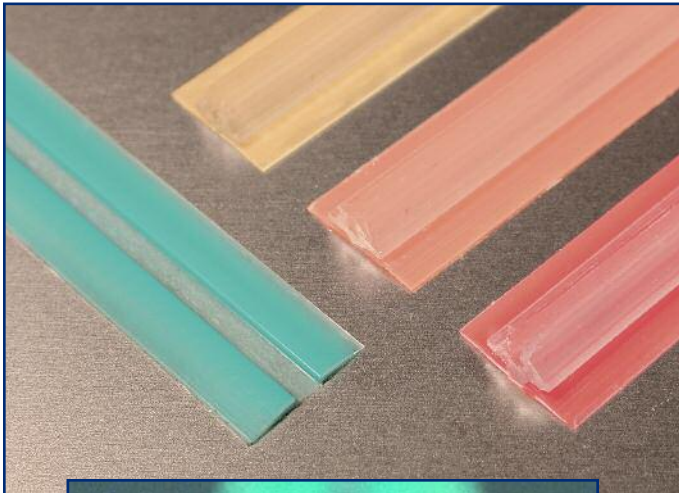
960 Industrial Drive • Elmhurst, IL 60126
 Toll-Free: (800) 334-7914
 Toll-Free Fax Orders: (800) 554-9124



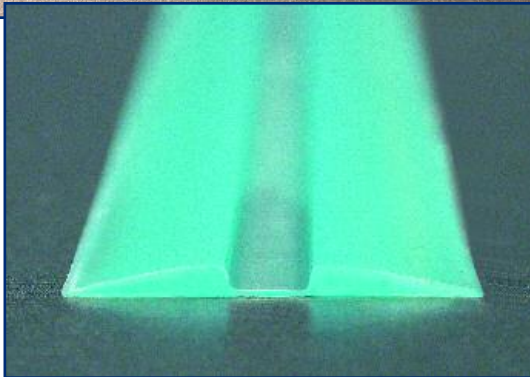
Creasing Matrix & Tools



Channel[®] Creasing Matrix (continued)

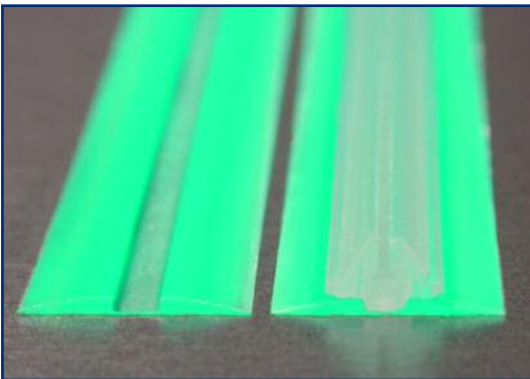


PLASTRIX[™] is a tough, one-piece polymer matrix with a specially tapered edge that allows for high press speeds without the need for taping or ramping. PLASTRIX[™] features a unique radius-profile that reduces draw on material being scored. Produced with an accurate, thermally-bonded locator system, which allows for easy installation and no residue to remove.



PLASTRIX[™] is a tough, one-piece polymer matrix with a specially tapered edge that allows for high press speeds without taping or ramping.

PLASTRIX[™] has a specially-formulated non-migrating adhesive that stays put for the duration of the run.



PLASTRIX[™] matrix is produced with an accurate, thermally-bonded locator system that allows for simple installation and leaves no adhesive residue to remove.

Please refer to the handy sizing information on the next two pages!

W West

2041 Elm Court • Ontario, CA 91761
Toll-Free: (800) 423-4478
Toll-Free Fax Orders: (866) 786-2437

W Southwest

2532 Converse Street • Dallas, TX 75207
Toll-Free: (800) 262-4695
Toll-Free Fax Orders: (800) 446-6651

W Midwest

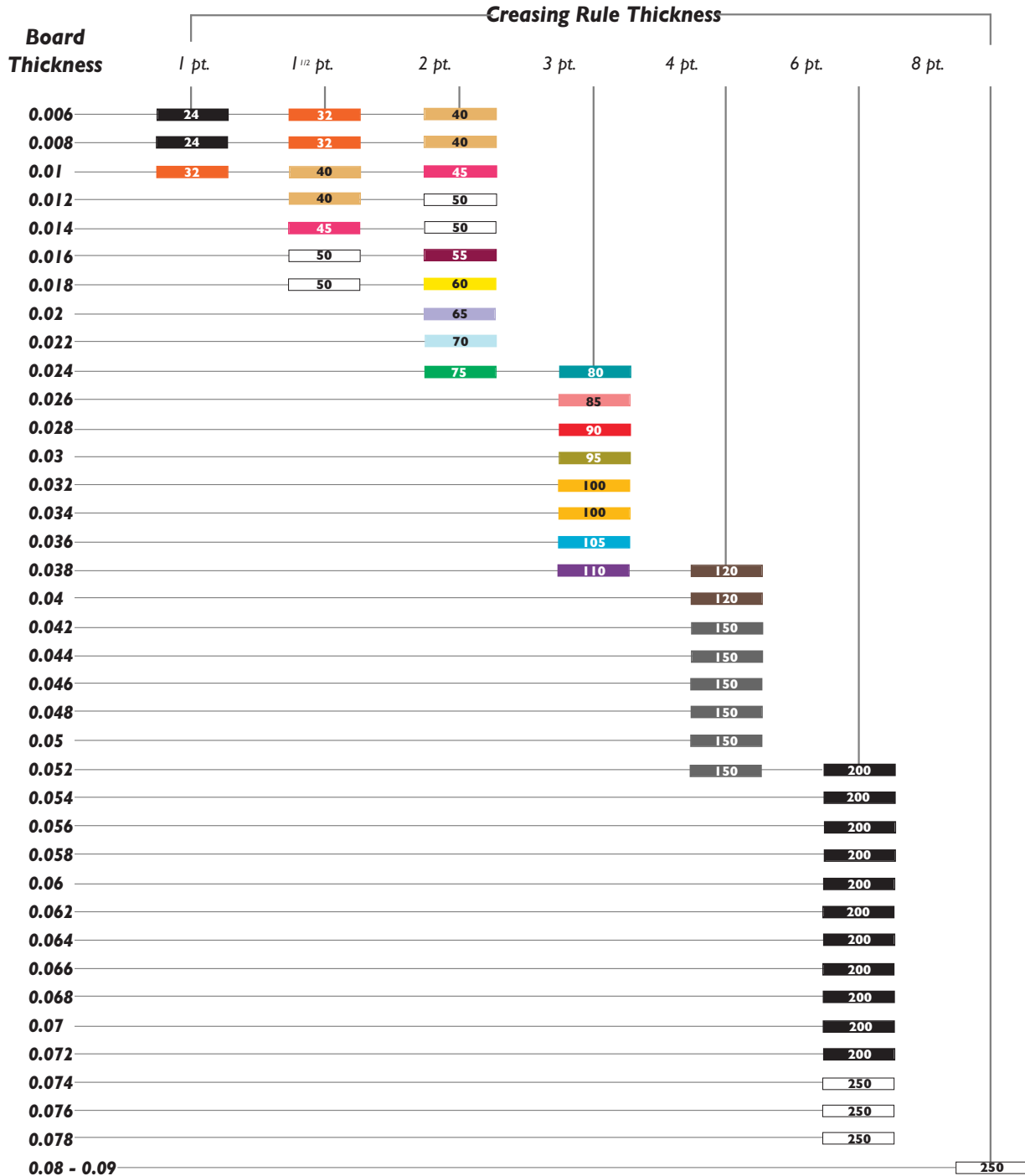
960 Industrial Drive • Elmhurst, IL 60126
Toll-Free: (800) 334-7914
Toll-Free Fax Orders: (800) 554-9124



Creasing Matrix & Tools



Plastrix™ Size Chart



HEIGHT FORMULA:

CUTTING RULE HEIGHT minus BOARD THICKNESS minus .005 (for 1/2") or .010 (for 1/4") = creasing rule height.

Plastrix™ Part Numbers & Color Codes on next page!

West

2041 Elm Court • Ontario, CA 91761
 Toll-Free: (800) 423-4478
 Toll-Free Fax Orders: (866) 786-2437

Southwest

2532 Converse Street • Dallas, TX 75207
 Toll-Free: (800) 262-4695
 Toll-Free Fax Orders: (800) 446-6651

Midwest

960 Industrial Drive • Elmhurst, IL 60126
 Toll-Free: (800) 334-7914
 Toll-Free Fax Orders: (800) 554-9124

Creasing Matrix & Tools

Plastrix™ Part Numbers & Color Codes

24 #24 Black Part# 380240 1/4" wide, 96 ft. / box Part# 380241 1/2" wide, 60 ft. / box	32 #32 Orange Part# 380320 1/4" wide, 96 ft. / box Part# 380321 1/2" wide, 60 ft. / box	40 #40 Buff Part# 380400 1/4" wide, 96 ft. / box Part# 380401 1/2" wide, 60 ft. / box	45 #45 Pink Part# 380450 1/4" wide, 96 ft. / box Part# 380451 1/2" wide, 60 ft. / box
50 #50 White Part# 380500 1/4" wide, 96 ft. / box Part# 380501 1/2" wide, 60 ft. / box	55 #55 Mulberry Part# 380550 1/4" wide, 96 ft. / box Part# 380551 1/2" wide, 60 ft. / box	60 #60 Yellow Part# 380600 1/4" wide, 96 ft. / box Part# 380601 1/2" wide, 60 ft. / box	60D #60D Brown (deeper channel) Part# 38060D 1/4" wide, 96 ft. / box Part# 38060E 1/2" wide, 60 ft. / box
65 #65 Violet Part# 380650 1/4" wide, 96 ft. / box Part# 380651 1/2" wide, 60 ft. / box	70 #70 Ice Blue Part# 380700 1/4" wide, 96 ft. / box Part# 380701 1/2" wide, 60 ft. / box	75 #75 Green Part# 380750 1/4" wide, 96 ft. / box Part# 380751 1/2" wide, 60 ft. / box	75D #75D Gray (deeper channel) Part# 38075D 1/4" wide, 96 ft. / box Part# 38075E 1/2" wide, 60 ft. / box
80 #80 Marine Blue Part# 380800 1/4" wide, 96 ft. / box Part# 380801 1/2" wide, 60 ft. / box	85 #85 Rose Part# 380850 1/4" wide, 96 ft. / box Part# 380851 1/2" wide, 60 ft. / box	90 #90 Red Part# 380900 1/4" wide, 96 ft. / box Part# 380901 1/2" wide, 60 ft. / box	90D #90D (deeper channel) Part# 38090D 1/4" wide, 96 ft. / box
95 #95 Gold Part# 380950 1/4" wide, 96 ft. / box Part# 380951 1/2" wide, 60 ft. / box	100 #100 Renol Yellow Part# 3801000 1/4" wide, 96 ft. / box Part# 3801001 1/2" wide, 60 ft. / box	105 #105 Blue Part# 3801050 1/4" wide, 96 ft. / box Part# 3801051 1/2" wide, 60 ft. / box	110 #110 Purple Part# 3801100 1/4" wide, 96 ft. / box Part# 3801101 1/2" wide, 60 ft. / box
120 #120/3/4 Brown Part# 381204 1/2" wide, 60 ft. / box #120/6 Brown Part# 381206 1/2" wide, 60 ft. / box #120/8 Brown Part# 381208 1/2" wide, 60 ft. / box	150 #150/3/4 Gray Part# 381504 1/2" wide, 60 ft. / box #150/6 Gray Part# 381506 1/2" wide, 60 ft. / box #150/8 Gray Part# 381508 1/2" wide, 60 ft. / box	200 #200/4 Black Part# 382004 1/2" wide, 60 ft. / box #200/6 Black Part# 382006 1/2" wide, 60 ft. / box #200/8 Black Part# 382008 1/2" wide, 60 ft. / box	250 #250/4 White Part# 382504 1/2" wide, 60 ft. / box #250/6 White Part# 382506 1/2" wide, 60 ft. / box #250/8 White Part# 382508 1/2" wide, 60 ft. / box

Offcenter and Double Plastrix

40 #40 Buff Offcenter Part# 396400 1/4" wide, 96 ft. / box Part# 396401 1/2" wide, 60 ft. / box	40 #40 Buff Double Part# 396410 1/8" double, 60 ft. / box Part# 396420 3/16" double, 60 ft. / box Part# 396440 1/4" double 60 ft. / box All sizes above 1/2" wide.	50 #50 White Offcenter Part# 396500 1/4" wide, 96 ft. / box Part# 396501 1/2" wide, 60 ft. / box	50 #50 White Double Part# 396510 1/8" double, 60 ft. / box Part# 396520 3/16" double, 60 ft. / box Part# 396540 1/4" double 60 ft. / box All sizes above 1/2" wide.
60 #60 Yellow Offcenter Part# 396601 1/4" wide, 96 ft. / box Part# 396610 1/2" wide, 60 ft. / box	60 #60 Yellow Double Part# 396610 1/8" double, 60 ft. / box Part# 396620 3/16" double, 60 ft. / box Part# 396640 1/4" double 60 ft. / box All sizes above 1/2" wide.		

Plastrix for Offset Presses

24 #24 Black for Offset w/LOC tape Part# 370240, 35 ft. / box	32 #32 Orange for Offset w/LOC tape Part# 370320, 35 ft. / box	40 #40 Buff for offset w/LOC tape Part# 370400, 35 ft. / box	50 #50 White for Offset w/LOC tape Part# 370500, 35 ft. / box
--	---	---	--

Channel® Creasing Matrix tools next page...

W West
2041 Elm Court • Ontario, CA 91761
Toll-Free: (800) 423-4478
Toll-Free Fax Orders: (866) 786-2437

W Southwest
2532 Converse Street • Dallas, TX 75207
Toll-Free: (800) 262-4695
Toll-Free Fax Orders: (800) 446-6651

W Midwest
960 Industrial Drive • Elmhurst, IL 60126
Toll-Free: (800) 334-7914
Toll-Free Fax Orders: (800) 554-9124



Creasing Matrix & Tools



Channel® Creasing Matrix (continued)

CCM Bench Miter Press



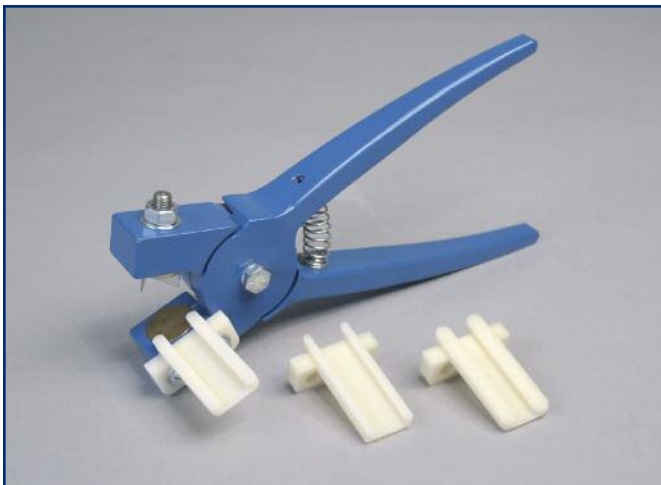
CCM Bench Miter Press - This rugged bench miter press can miter two ends of matrix at one time! Reversible cutting anvil for long life. Guides for both 1/4" and 1/2" width matrix.

Multi-Cutter



Multi-Cutter features easy-grip handles and spare blades with caddy that stores in the handle. Great for cutting and trimming all types of non-metallic matrix and other non-metallic materials.

Matrix Miter Pliers



Matrix Miter Pliers - feature spring action and three different guide sizes for three widths of matrix up to 1/2". Replacement brass beds and blades are also available (inset photos).

Dolphin Cutter



Dolphin Cutter - makes easy angle cuts on matrix and other materials. Handy scribed cutting guide for easy position of material to be cut or trimmed.

W West

2041 Elm Court • Ontario, CA 91761
Toll-Free: (800) 423-4478
Toll-Free Fax Orders: (866) 786-2437

W Southwest

2532 Converse Street • Dallas, TX 75207
Toll-Free: (800) 262-4695
Toll-Free Fax Orders: (800) 446-6651

W Midwest

960 Industrial Drive • Elmhurst, IL 60126
Toll-Free: (800) 334-7914
Toll-Free Fax Orders: (800) 554-9124